



AUBURN ITC

*A Five-Building Industrial Park with
Multiple Suites for Lease in Auburn*

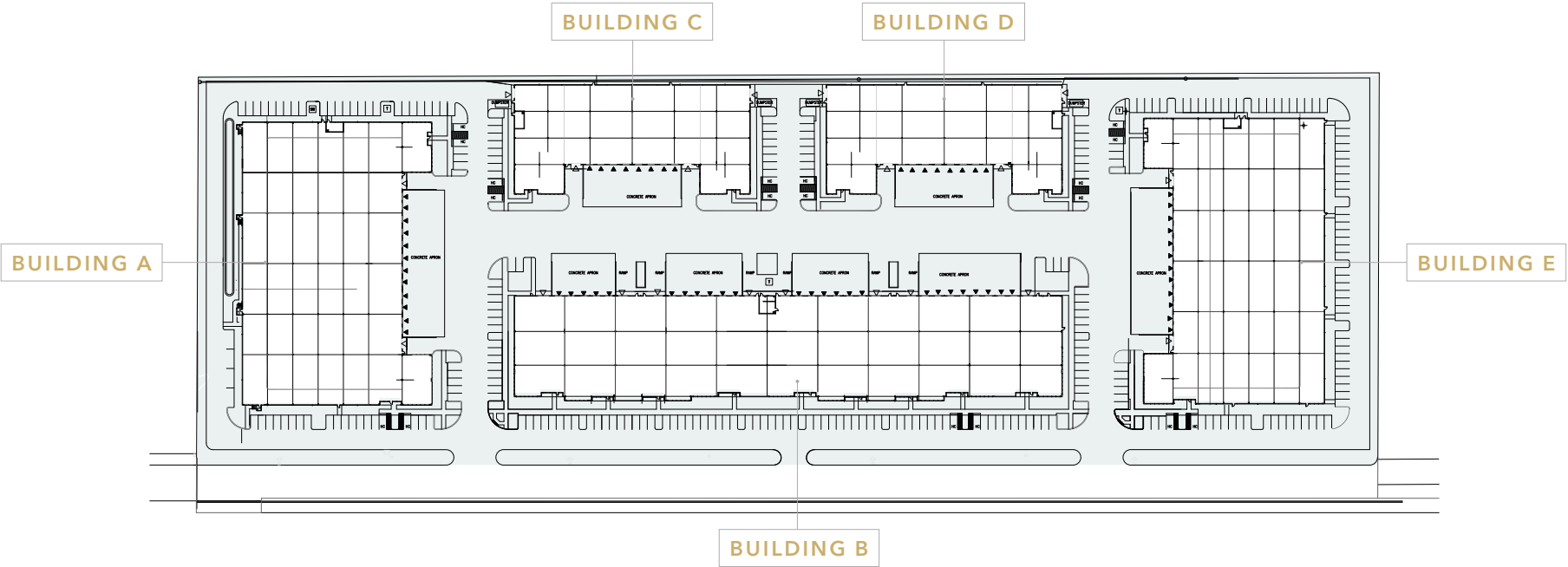
1704, 1808, & 2108 B ST NW
AUBURN, WA



PROPERTY HIGHLIGHTS

- Up to 145,081 SF available
- Easy access to SR-167, SR-18, and I-5
- Close proximity to Auburn Municipal Airport & Emerald Downs
- Abundant parking
- 24' clear height
- 50' concrete aprons
- Canopies over loading doors
- Ample truck maneuvering room
- Flexible power distribution
- M-1 zoning
- Contact agents for rates

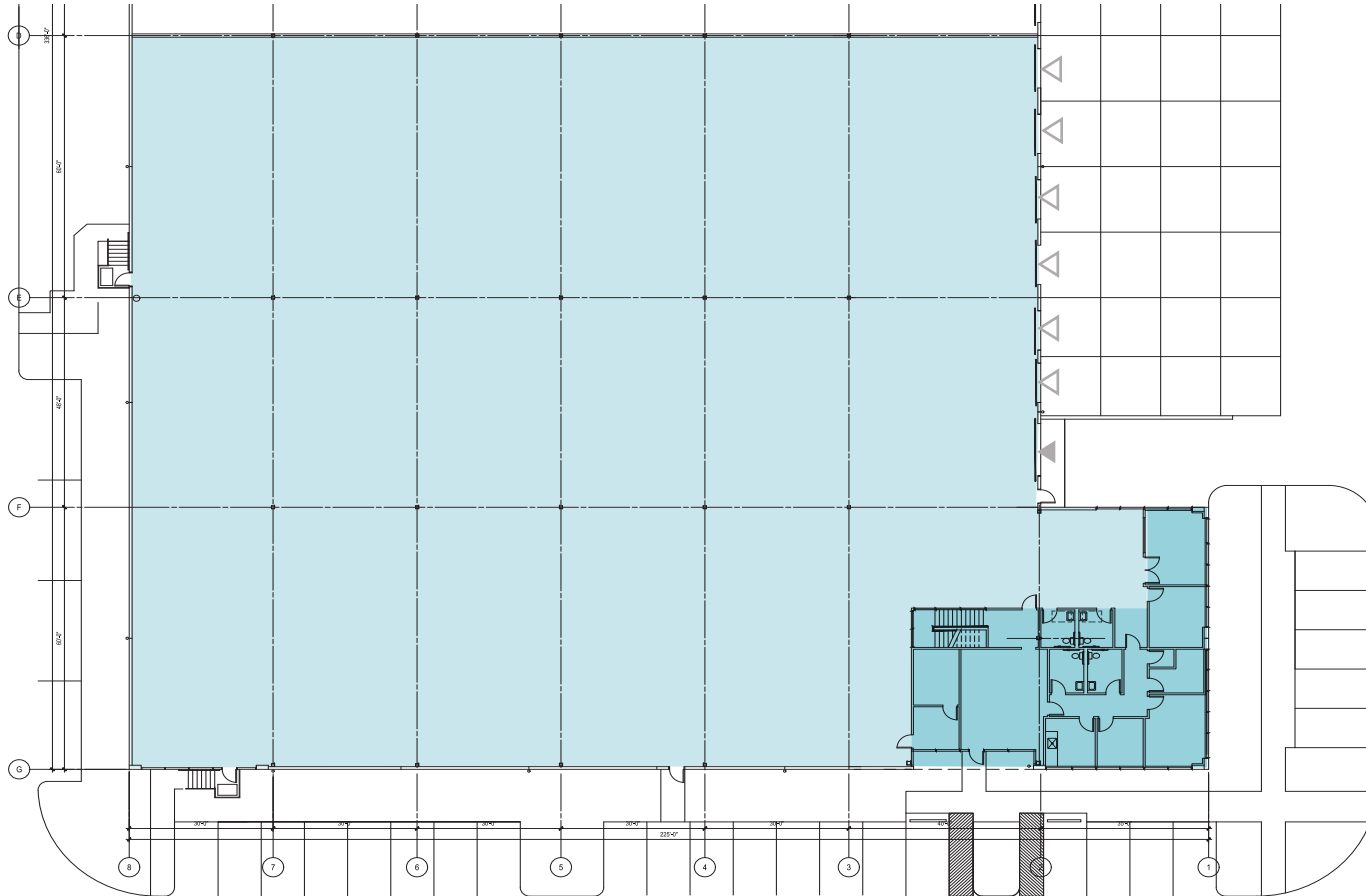




AVAILABILITIES

Suite	Total Area	Office	DH Loading	GL Loading	Shell Rate	Office Rate	Available
A-110	35,991 SF	4,310 SF	6	1	\$1.20/SF	\$1.25/SF	September 1, 2025
A-120	34,020 SF	1,972 SF	6	1	\$1.20/SF	\$1.25/SF	October 1, 2025
B-150	14,850 SF	950 SF	6	1	\$1.40/SF	\$1.30/SF	Now
E-110	32,610 SF	4,749 SF	6	1	\$1.20/SF	\$1.25/SF	Now
E-120	27,610 SF	6,107 SF	6	1	\$1.20/SF	\$1.25/SF	Now

BUILDING A, SUITE 110

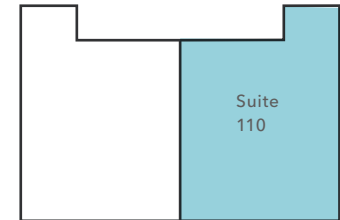


LEGEND

- | | |
|-------------|---------------------|
| ■ Office | ▲ Drive-In Loading |
| ■ Warehouse | △ Dock-High Loading |



BUILDING A

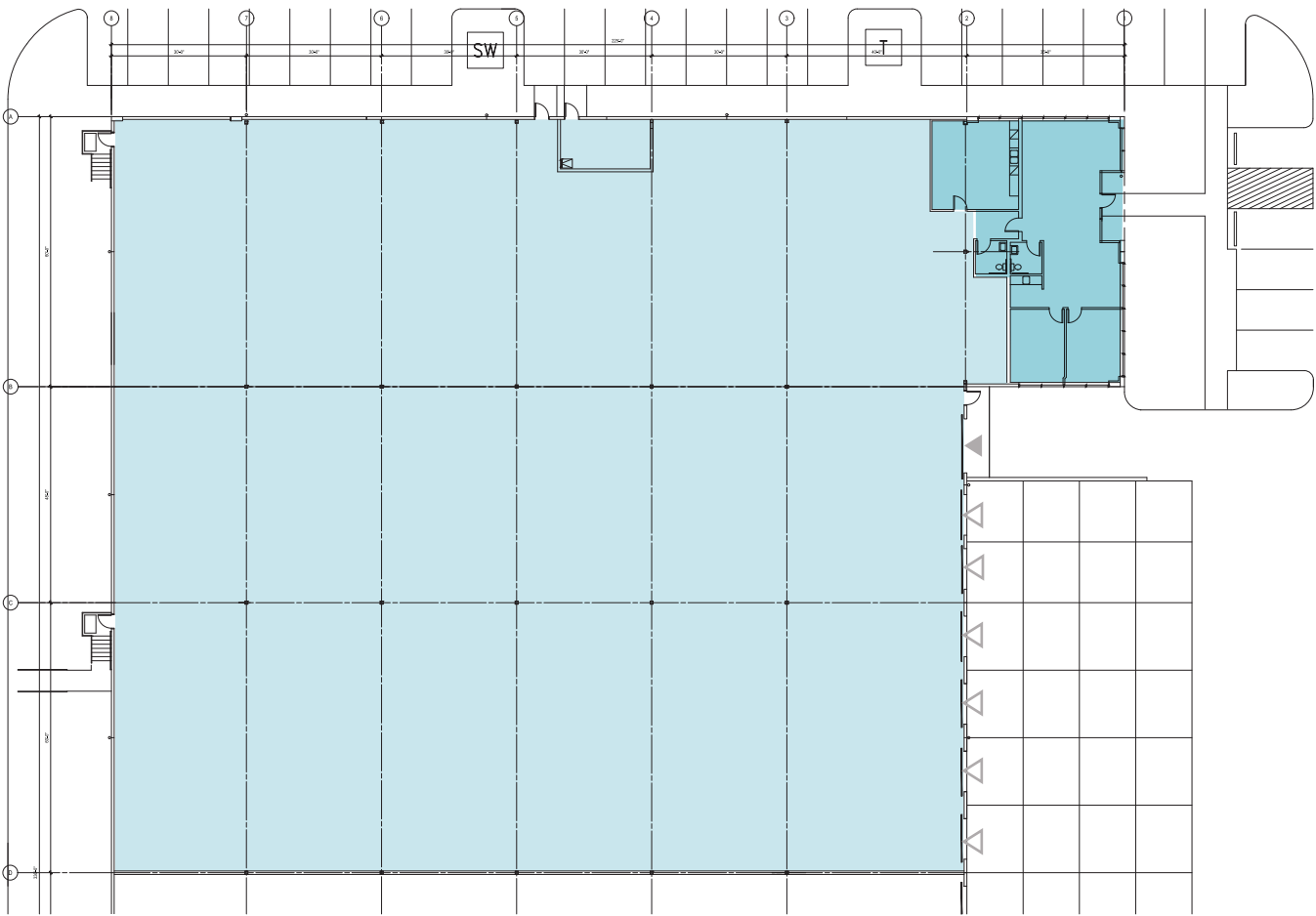


35,991 SF
TOTAL AREA

4,310 SF
OFFICE

09/01/25
AVAILABLE

BUILDING A, SUITE 120

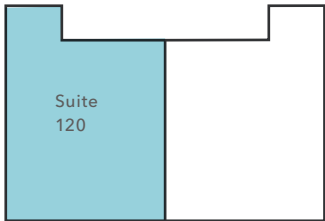


LEGEND

- Office
- Warehouse
- Drive-In Loading
- Dock-High Loading



BUILDING A

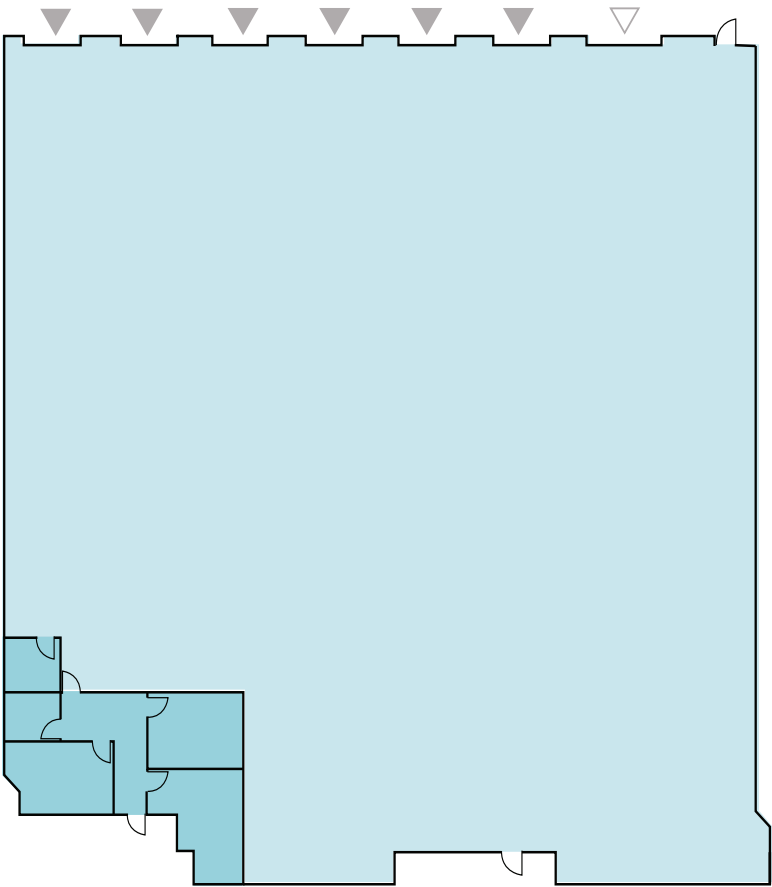


34,020 SF
TOTAL AREA

1,972 SF
OFFICE

10/01/25
AVAILABLE

BUILDING B, SUITE 150

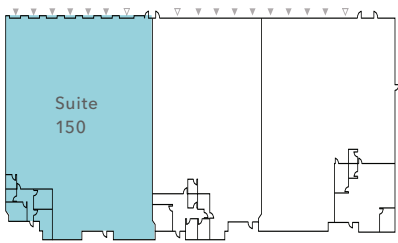


LEGEND

- | | |
|-----------|-------------------|
| Office | Drive-In Loading |
| Warehouse | Dock-High Loading |

AVAILABLE FOR LEASE

BUILDING B



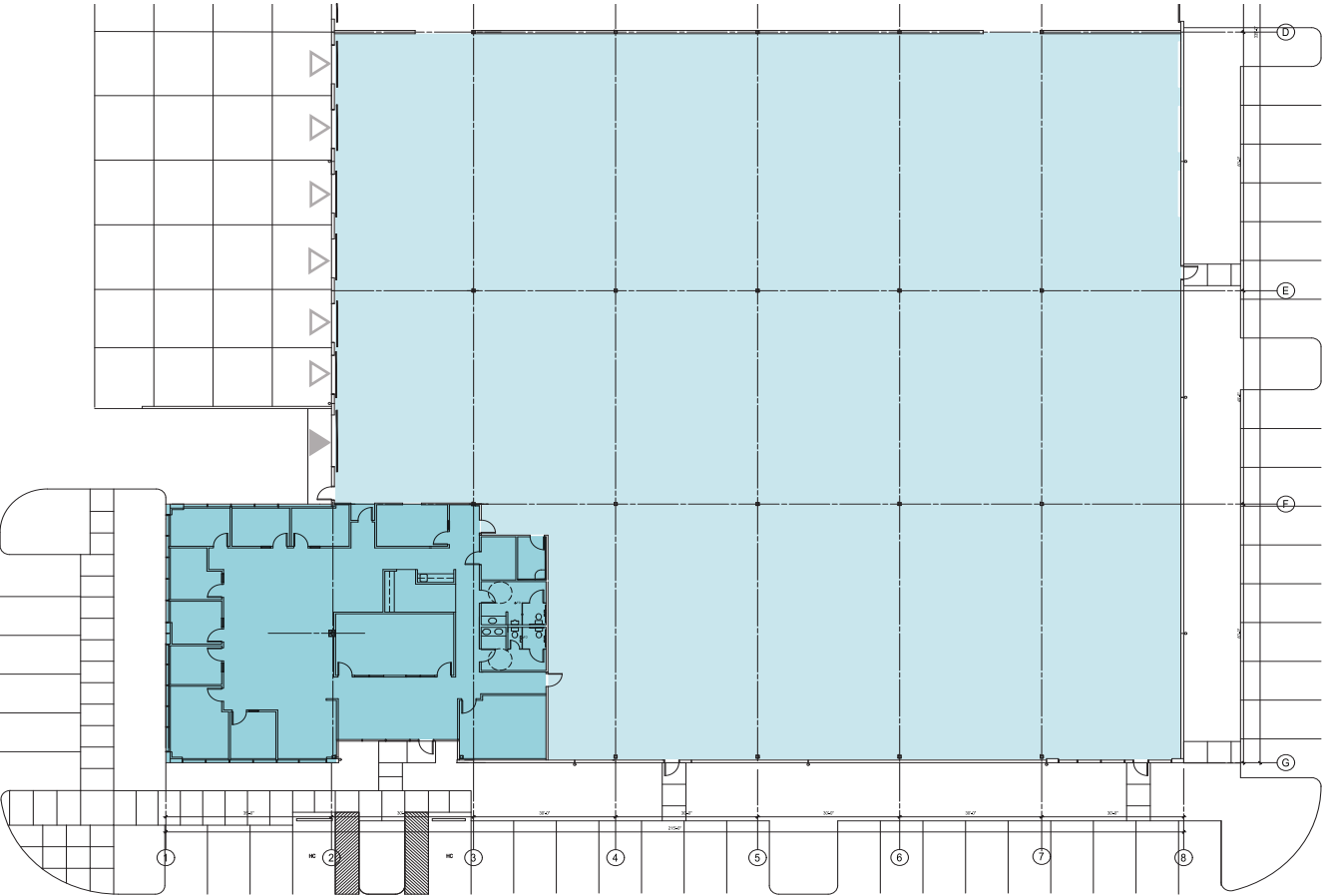
14,850 SF
TOTAL AREA

950 SF
OFFICE



NOW
AVAILABLE

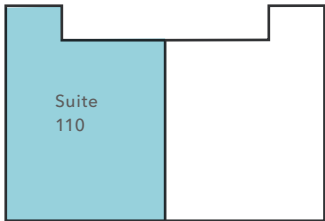
BUILDING E, SUITE 110



LEGEND

- Office
- Warehouse
- Drive-In Loading
- Dock-High Loading

BUILDING E

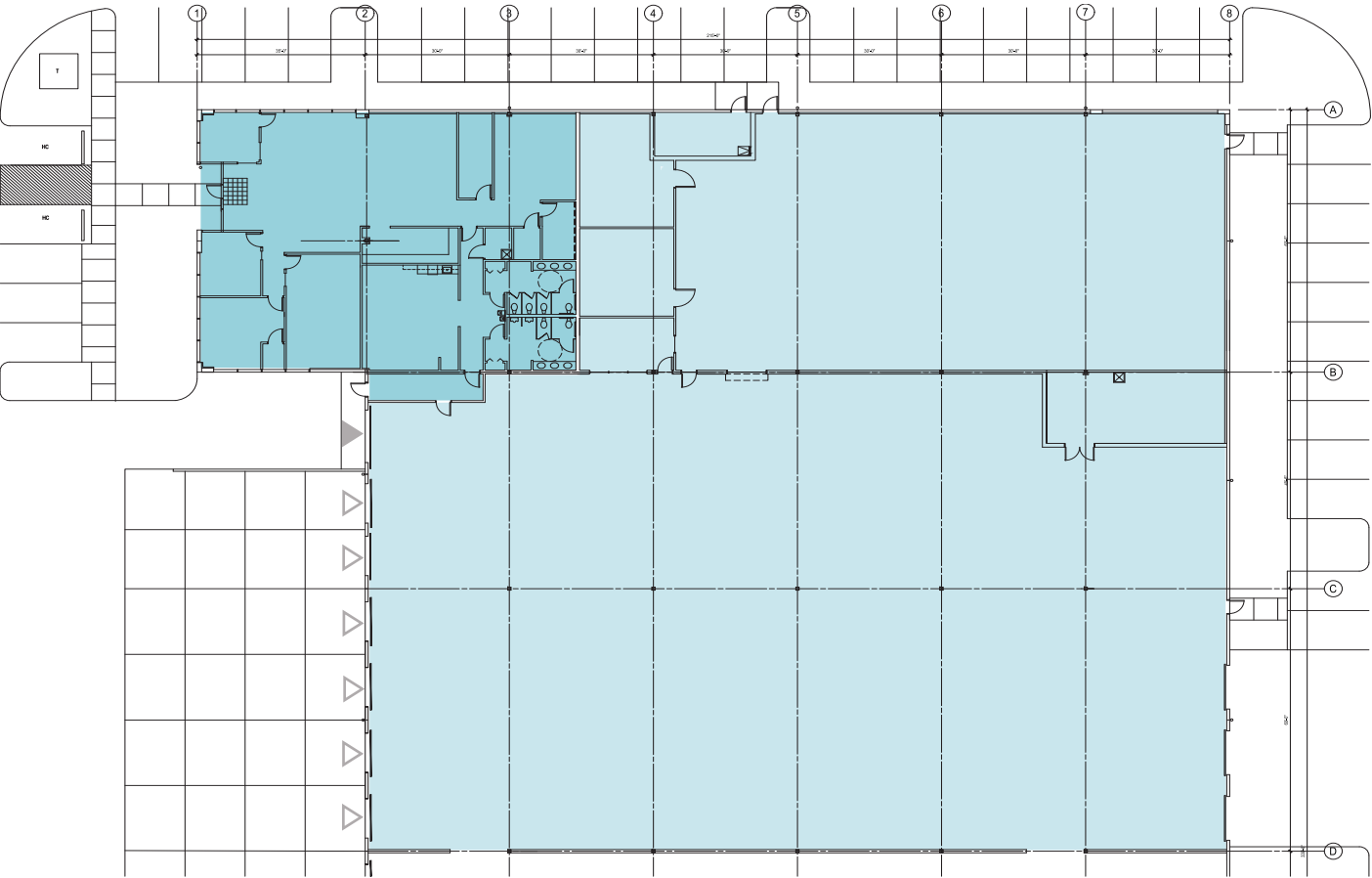


32,610 SF
TOTAL AREA

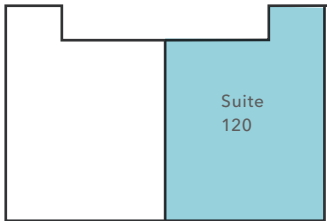
4,749 SF
OFFICE

NOW
AVAILABLE

BUILDING E, SUITE 120



BUILDING E



27,610 SF
TOTAL AREA

6,107 SF
OFFICE

NOW
AVAILABLE

LEGEND

- Office
- Warehouse
- Drive-In Loading
- Dock-High Loading



24 MI

SEATTLE

15.5 MI

TACOMA

10.7 MI

SEATAC

CHRIS CORR

Executive Vice President

206.248.7324

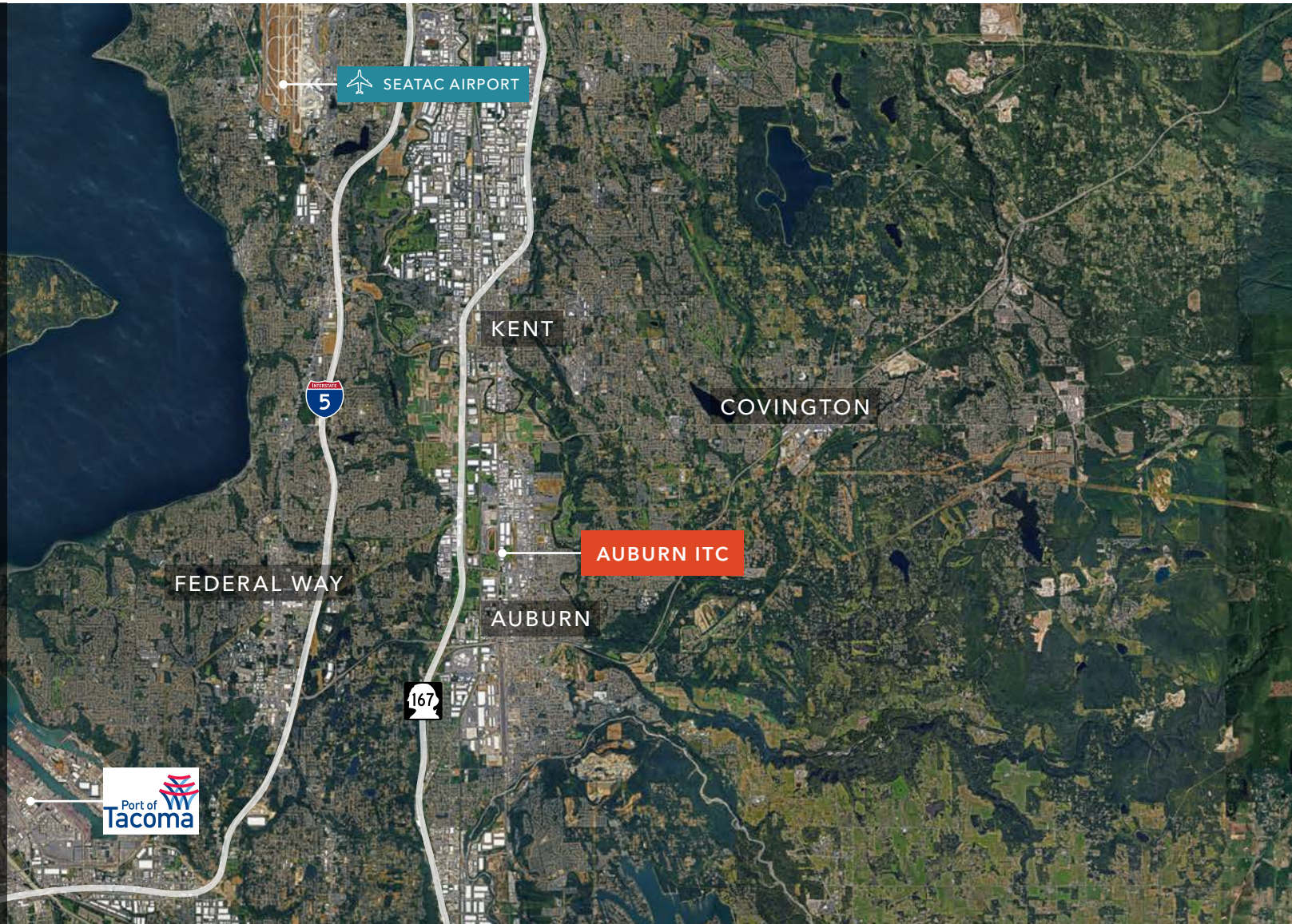
chris.corr@kidder.com

MATT MURRAY, SIOR

Executive Vice President

206.248.6541

matt.murray@kidder.com



KIDDER.COM

This information supplied herein is from sources we deem reliable. It is provided without any representation, warranty, or guarantee, expressed or implied as to its accuracy. Prospective Buyer or Tenant should conduct an independent investigation and verification of all matters deemed to be material, including, but not limited to, statements of income and expenses. Consult your attorney, accountant, or other professional advisor. All Kidder Mathews designs are the sole property of Kidder Mathews. Branded materials and layouts are not authorized for use by any other firm or person.