

# AUBURN ITC BLDG A, STE 110



*Industrial Space  
For Lease*

**35,991**  
TOTAL SF

**4,310**  
OFFICE SF

**9/1/25**  
DATE AVAILABLE

35,991 SF available

4,310 SF office (2,537 SF down, 1,971 SF up)

Easy access to SR-167 via 277th St or 15th St & access to I-5 via 277th St

Available 9/1/2025

6 DH / 1 GL doors, 24' clear height

M-1 zoning

Canopies over loading doors

\$1.20 shell rate, \$1.25 office rate

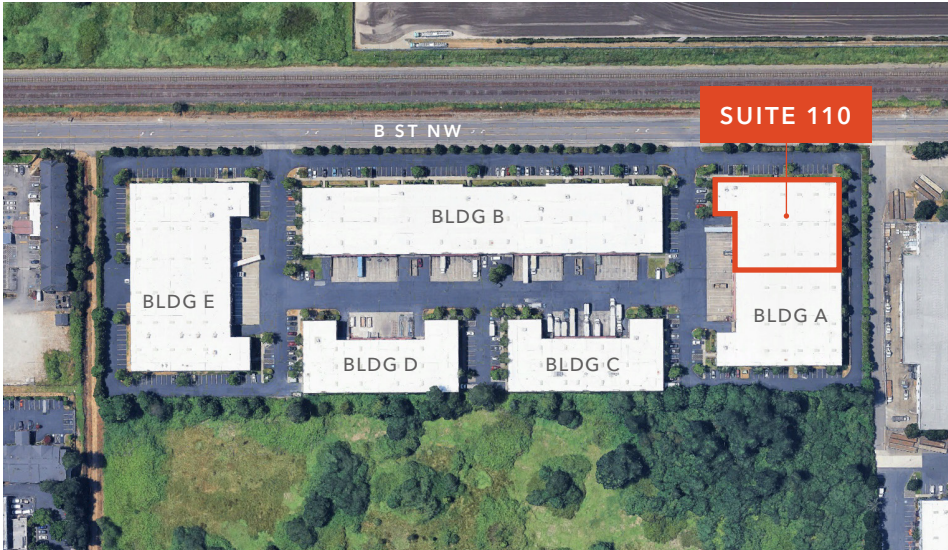
50' concrete aprons

**CHRIS CORR**  
206.248.7324  
chris.corr@kidder.com

**MATT MURRAY, SIOR**  
206.248.6541  
matt.murray@kidder.com

**KIDDER.COM**

This information supplied herein is from sources we deem reliable. It is provided without any representation, warranty, or guarantee, expressed or implied as to its accuracy. Prospective Buyer or Tenant should conduct an independent investigation and verification of all matters deemed to be material, including, but not limited to, statements of income and expenses. Consult your attorney, accountant, or other professional advisor.



*35,991 SF*

AVAILABLE

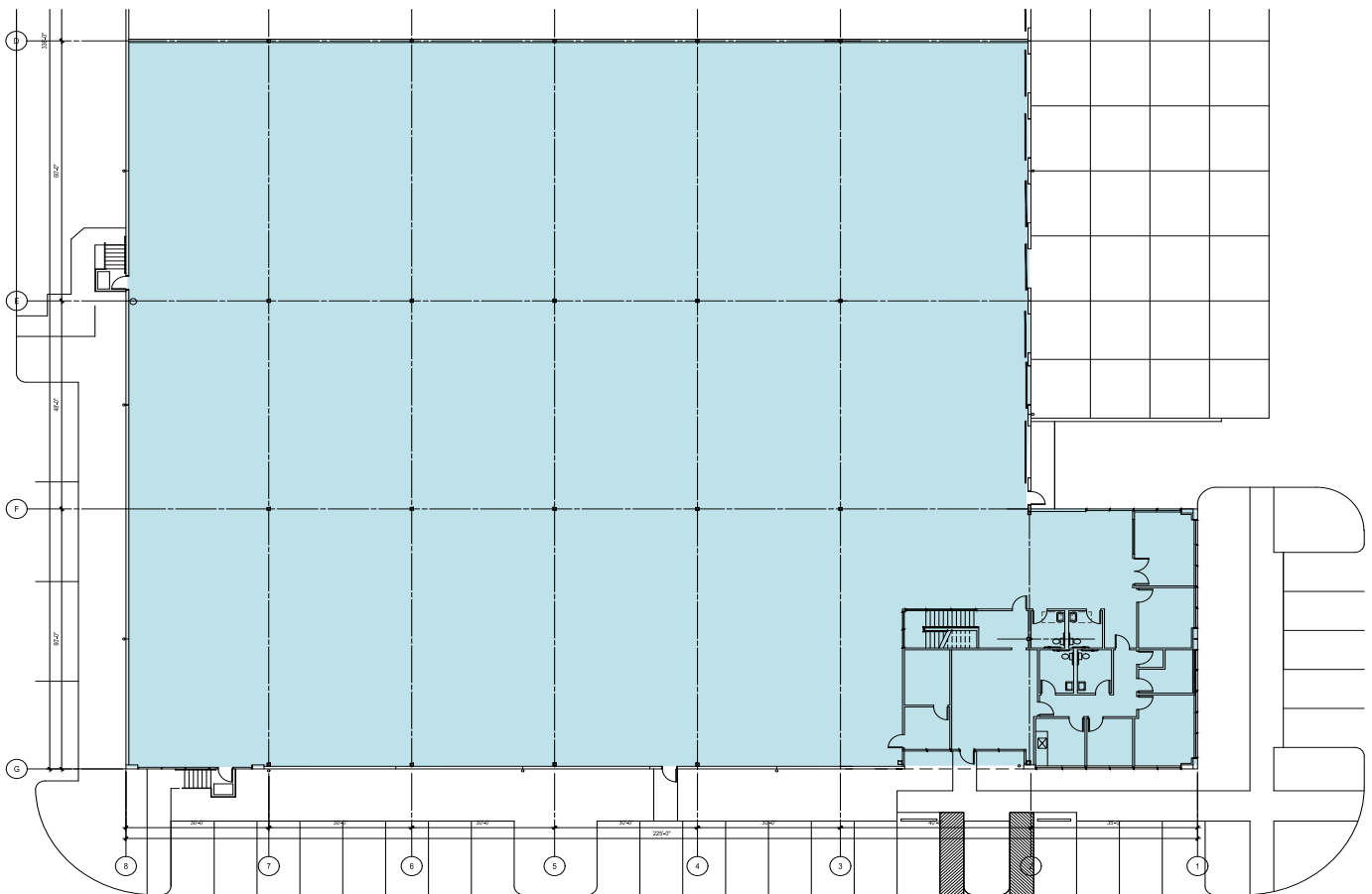
*\$1.20*

SHELL RATE

*9/1/25*

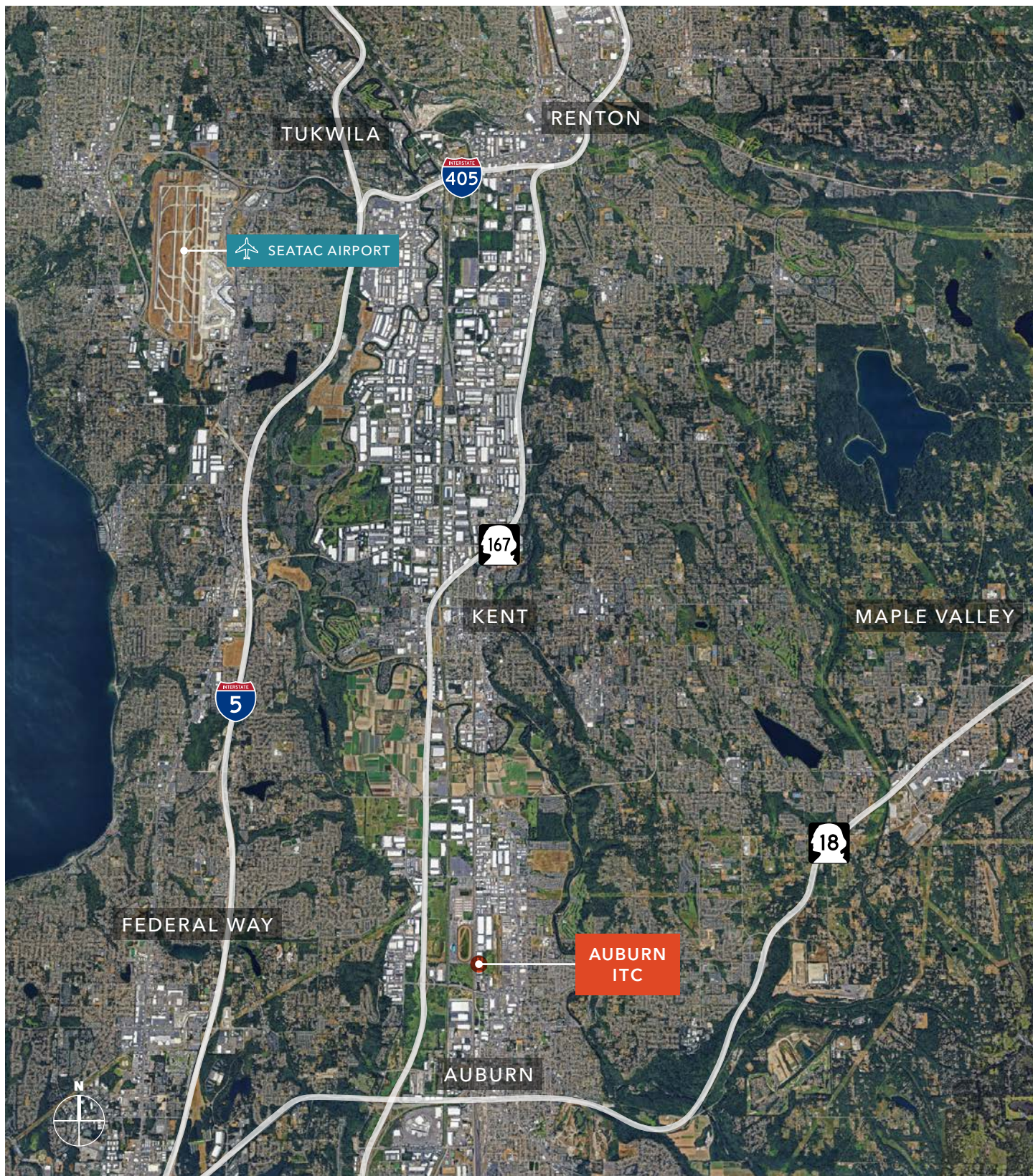
DATE AVAILABLE

**SUITE 110 FLOORPLAN**



**KIDDER.COM**

This information supplied herein is from sources we deem reliable. It is provided without any representation, warranty, or guarantee, expressed or implied as to its accuracy. Prospective Buyer or Tenant should conduct an independent investigation and verification of all matters deemed to be material, including, but not limited to, statements of income and expenses. Consult your attorney, accountant, or other professional advisor.



KIDDER.COM

This information supplied herein is from sources we deem reliable. It is provided without any representation, warranty, or guarantee, expressed or implied as to its accuracy. Prospective Buyer or Tenant should conduct an independent investigation and verification of all matters deemed to be material, including, but not limited to, statements of income and expenses. Consult your attorney, accountant, or other professional advisor.